



"OUR GUARANTEE IS WATER TIGHT"

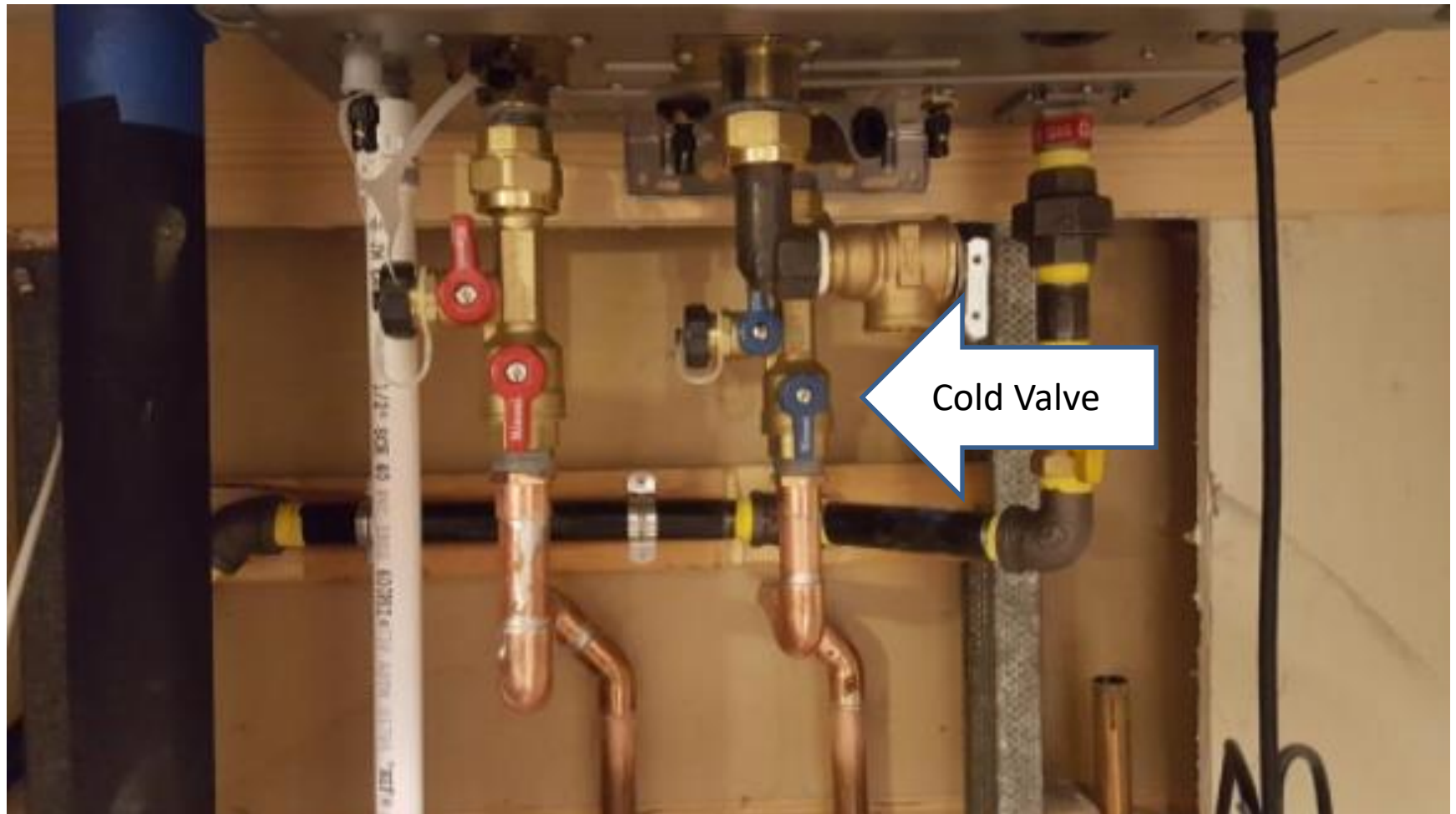
Step by step instructions on how to protect your tankless water heater when the electricity goes out during an freeze.

Compliments of Reeh Plumbing
830.997.0020

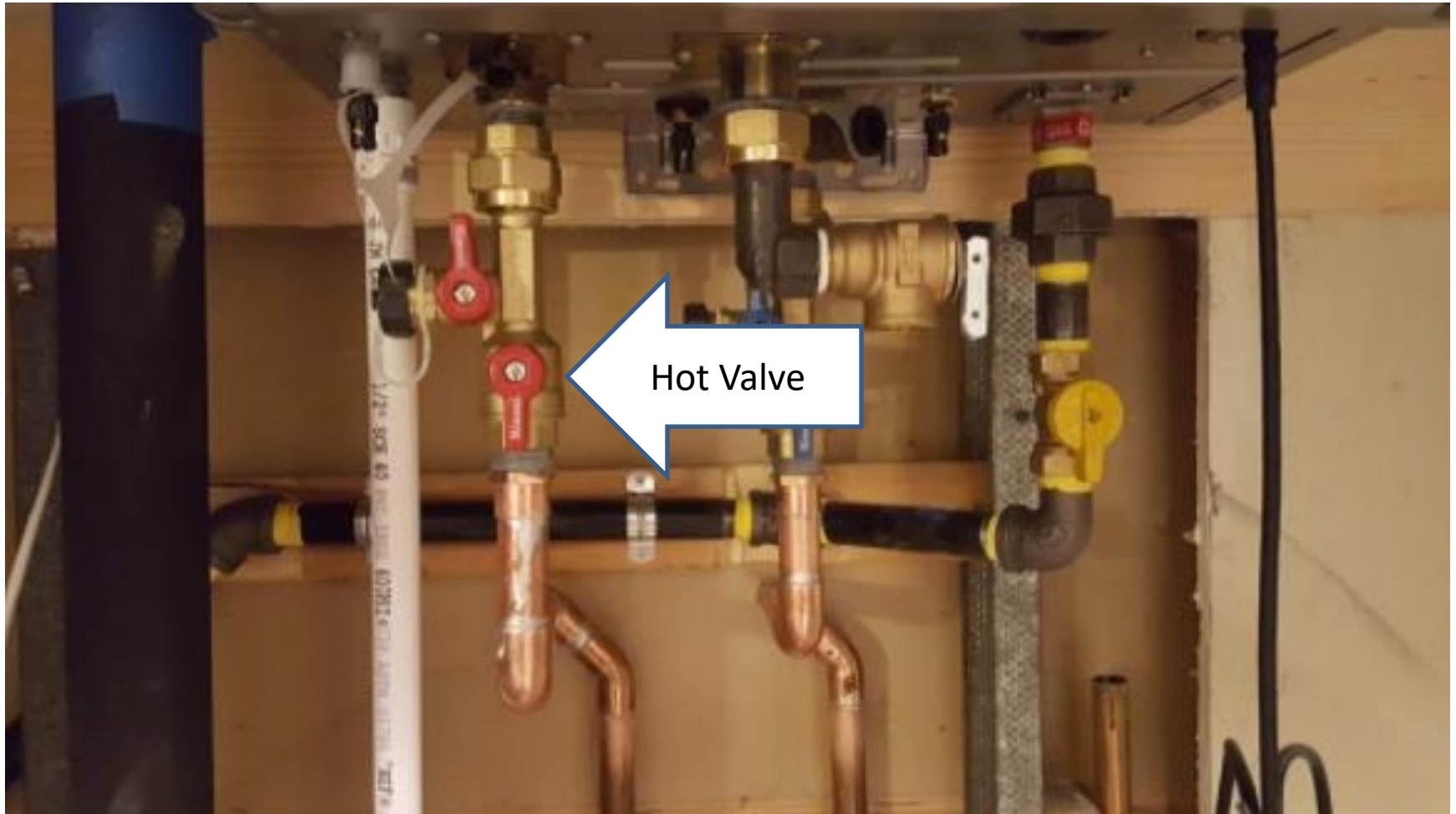
Step 1 – Unplug your tankless unit from the electrical outlet in the bottom of the outside cabinet and turn off the gas valve.



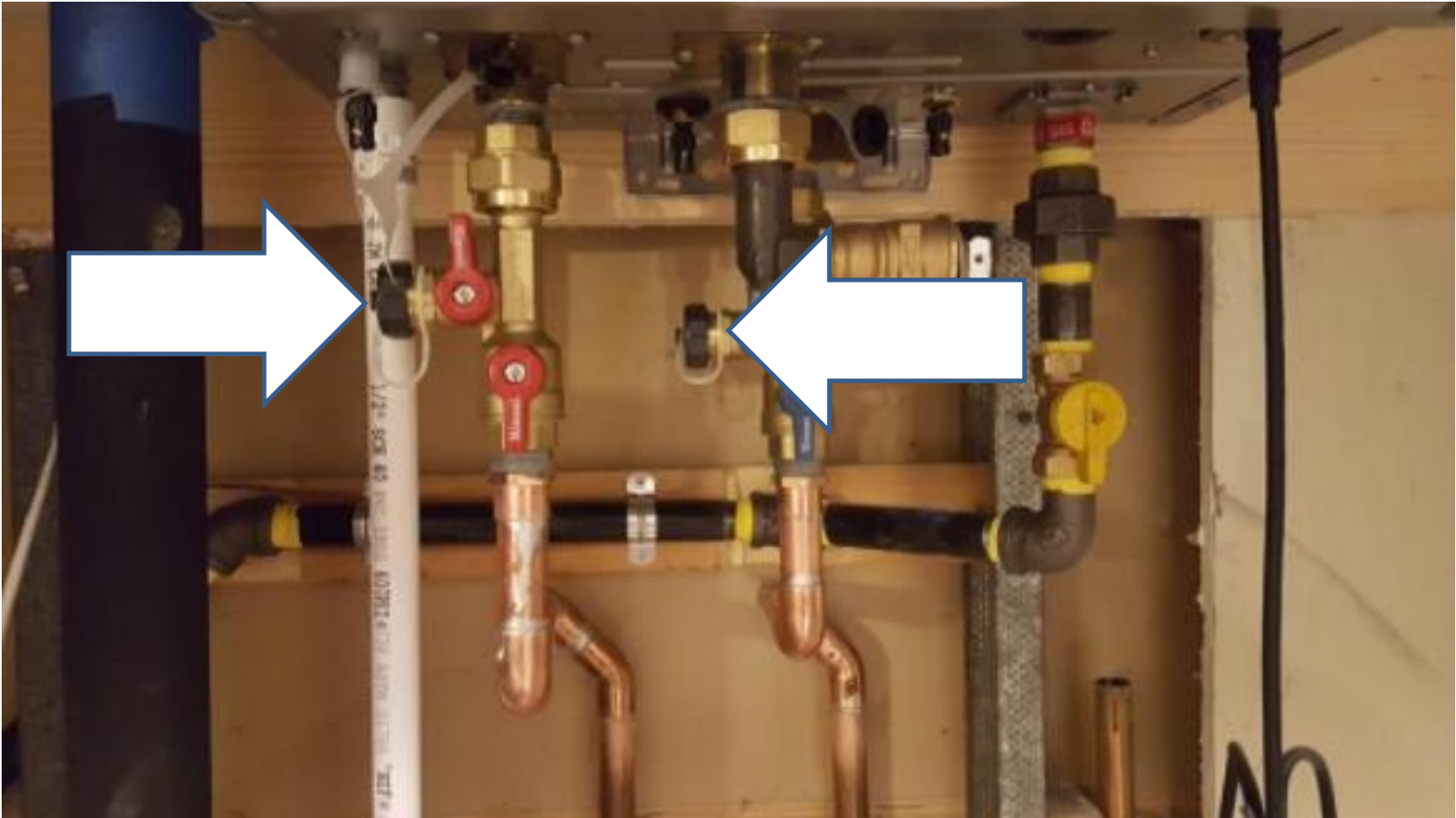
Step 2 – Turn off the cold water valve



Step 3 – Turn off the hot water valve

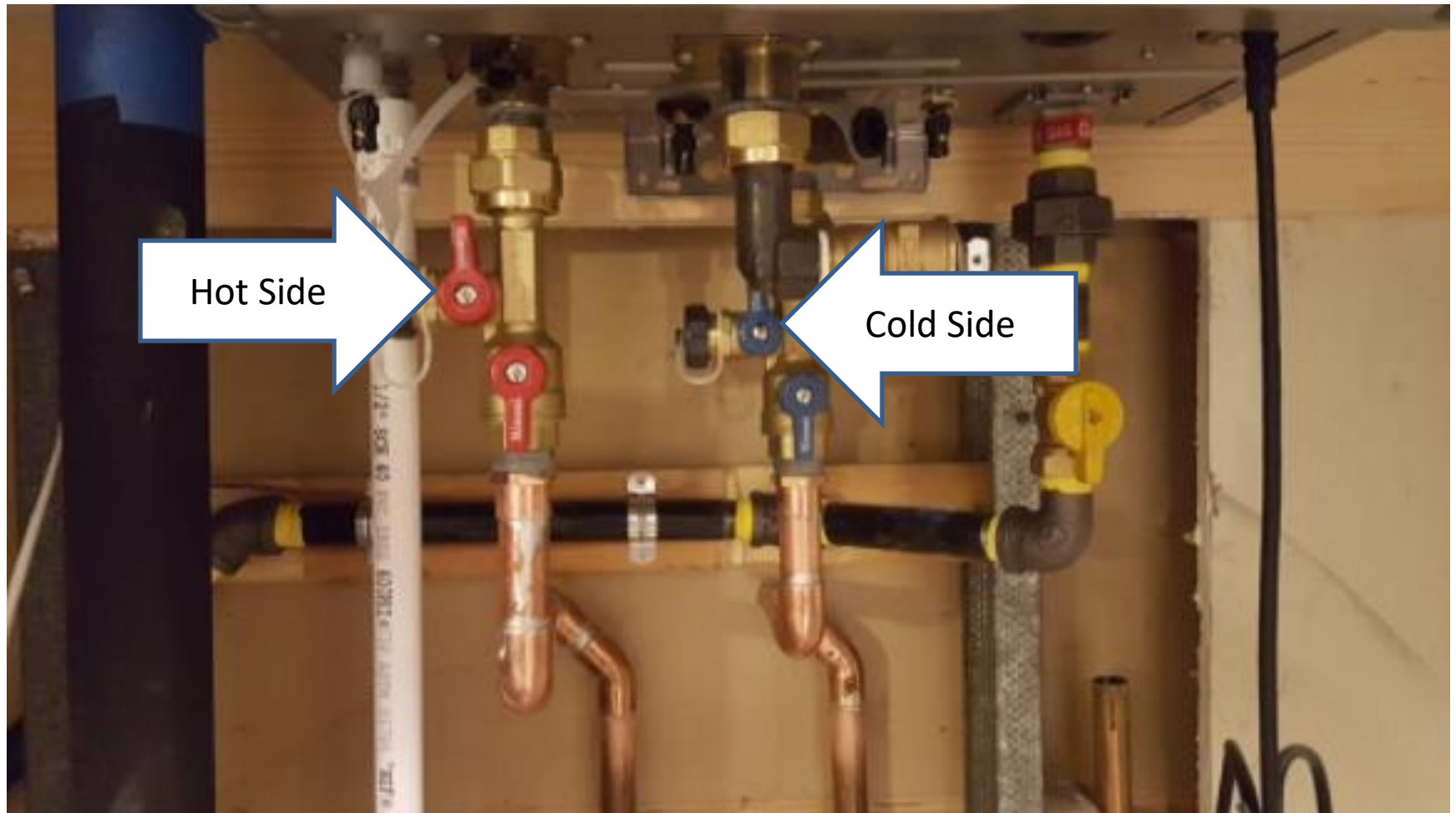


Step 4 – Unscrew these caps



Step 5 – Open these two valves to drain tankless water heater.

Caution – When opening the valve on the hot side, hot water will be released as the unit drain down.



Step 6 – When power is restored simply reverse this process to put your unit back in service. If water does not flow into you unit, the lines leading up to the cut off valves has probably frozen. These can be thawed using a household hair dryer applying moderate heat on the pipes themselves.

